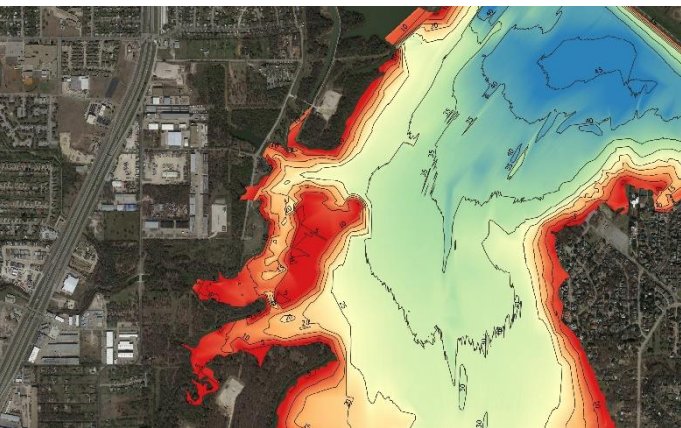


Oxyjet WA Pond Bathymetry New!



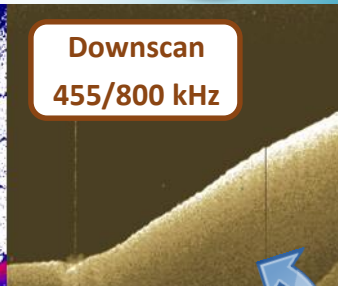
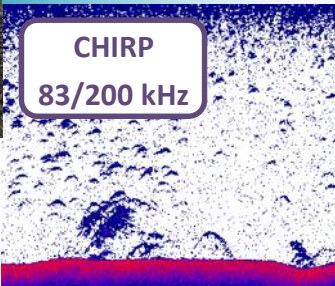
KEEP OFF THE WATER!

**STAY SAFE AND MAP BY
REMOTE-CONTROL**



know your **DEPTH** and know **MORE** about your **WATER**

Waterbody management for lakes, ponds and dams depends on accurate depth information



Dual-frequency sonar transducers

Depth Mapping is Critical for:



Accurate *water volume* calculations



Limiting *algal blooms* and *nutrient loading*



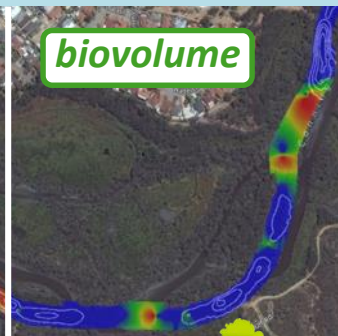
Resolving *volume loss* from *sedimentation*

Oxyjet p1100 UBV

Un-manned
Bathymetric
Vessel



deliver **essential water management info**



Inquire with Oxyjet WA for:

*Depth Surveying

*Aquatic Plant Volume

*Sediment Density



In less than 40 minutes, the Oxyjet p1100 can depth-map a 2.2 hectare waterbody in water shallow as 0.3 meters!

www.oxyjet.net • 08-6262-5358 • sales@oxyjet.net